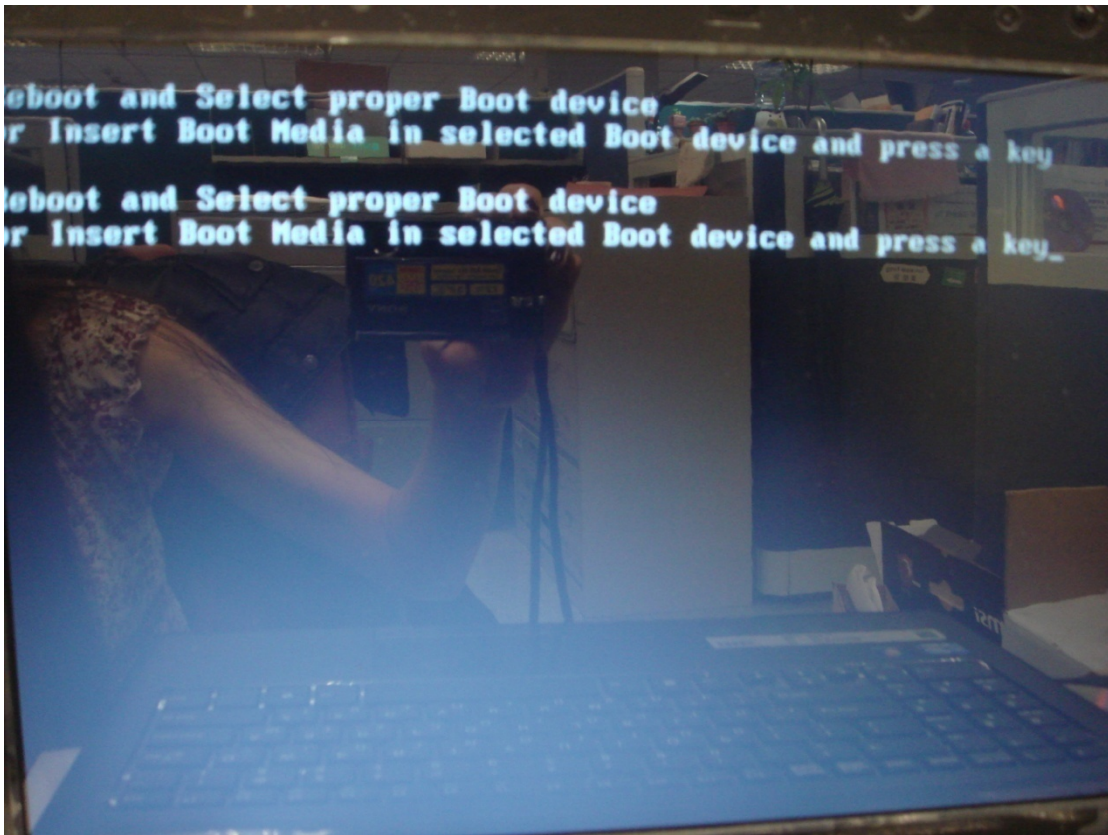


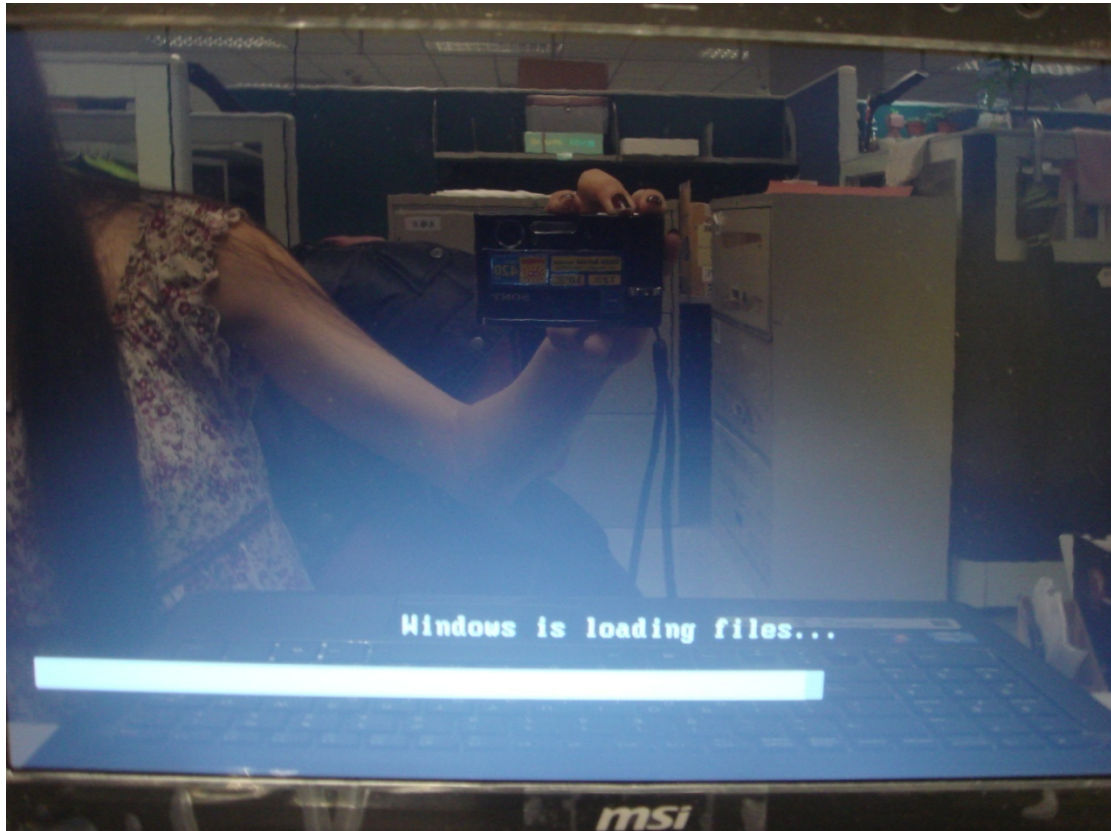
# Time Stamp Unlocker SOP for CR640/CR640/CX640MX

## System Crash

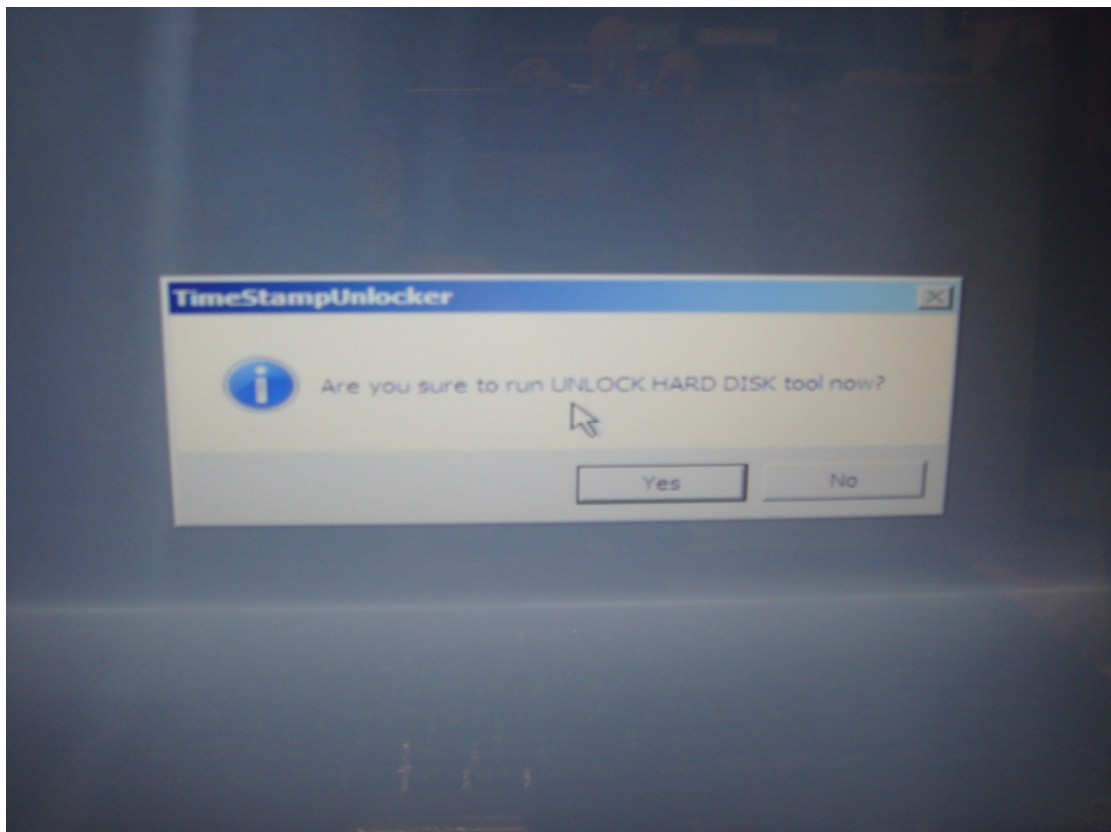
After working on the notebook for a period of time, you might encounter the system crash as the picture below. You can neither enter BIOS setup nor Windows, and the error message keeps jumping up. To solve this problem, please download the file from the link: [http://download.msi.com/nb\\_drivers/ap/Time Stamp\\_20110711.zip](http://download.msi.com/nb_drivers/ap/Time Stamp_20110711.zip). After download is completed, please unzip the file and burn the iso file to a CD, and then follow the instructions to recover your system.



1. Put the Time Stamp Unlocker CD in the ODD, and press the “**enter**” key. System will automatically start the recovery process.



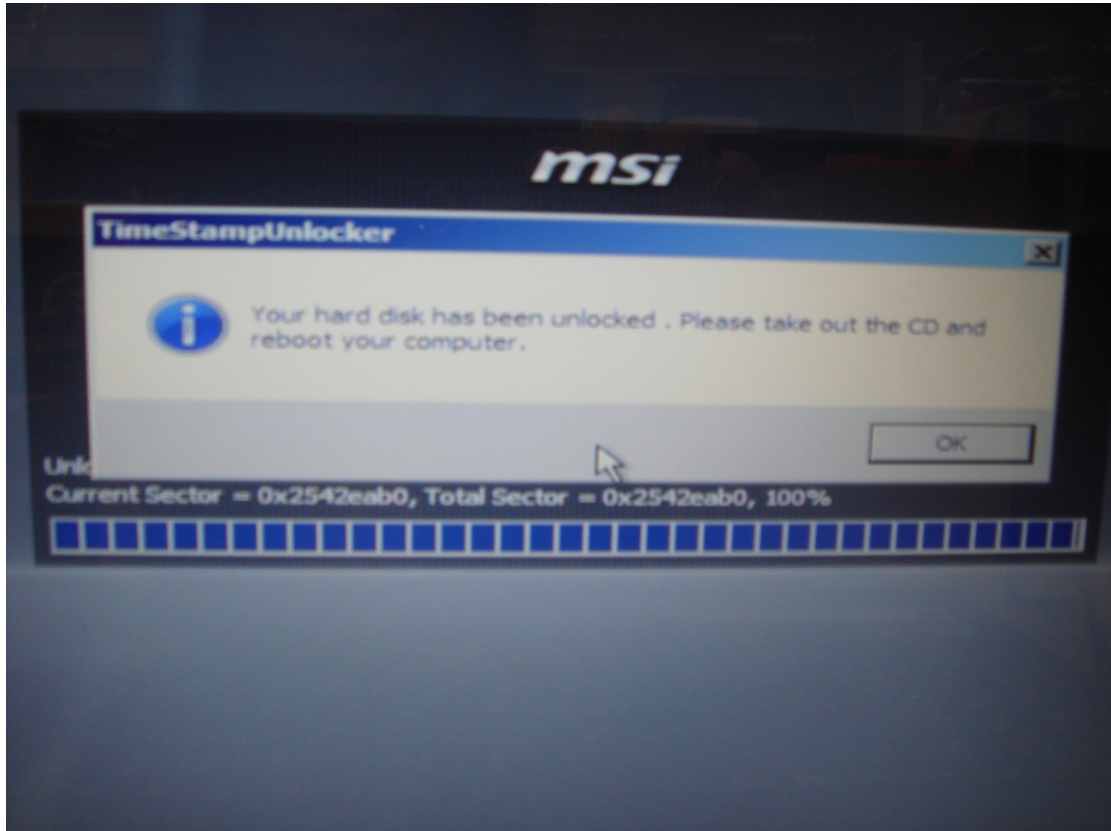
2. Please click **"Yes"** when you see the message **"Are you sure to run UNLOCK HARD DISK tool now?"**.



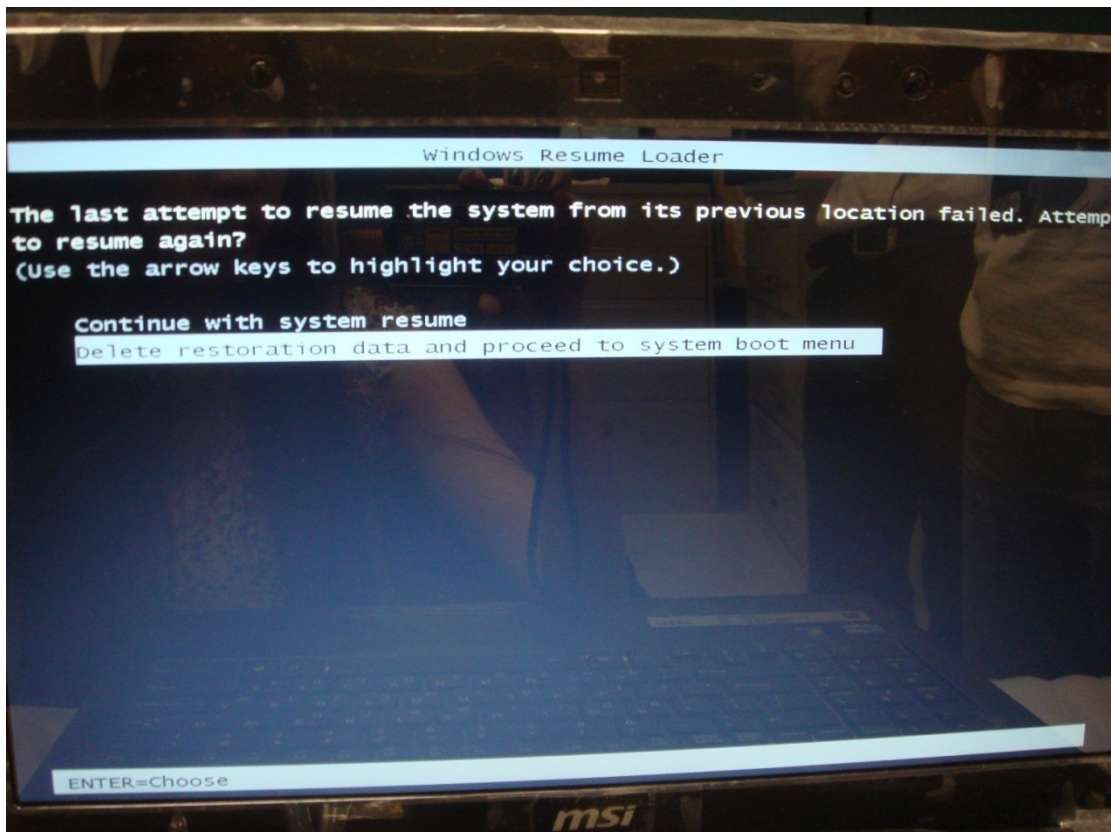
3. Time Stamp Unlocker now is unlocking your HDD which would cost a few minutes, please wait patiently.



4. After the process is done, it will jump out a notification to tell you "**Your hard disk has been unlocked**". Please click "**ok**" and **reboot** your computer.



5. After system reboot, the message will come out as below picture, please select **"Delete restoration data and proceed to system boot menu"**.



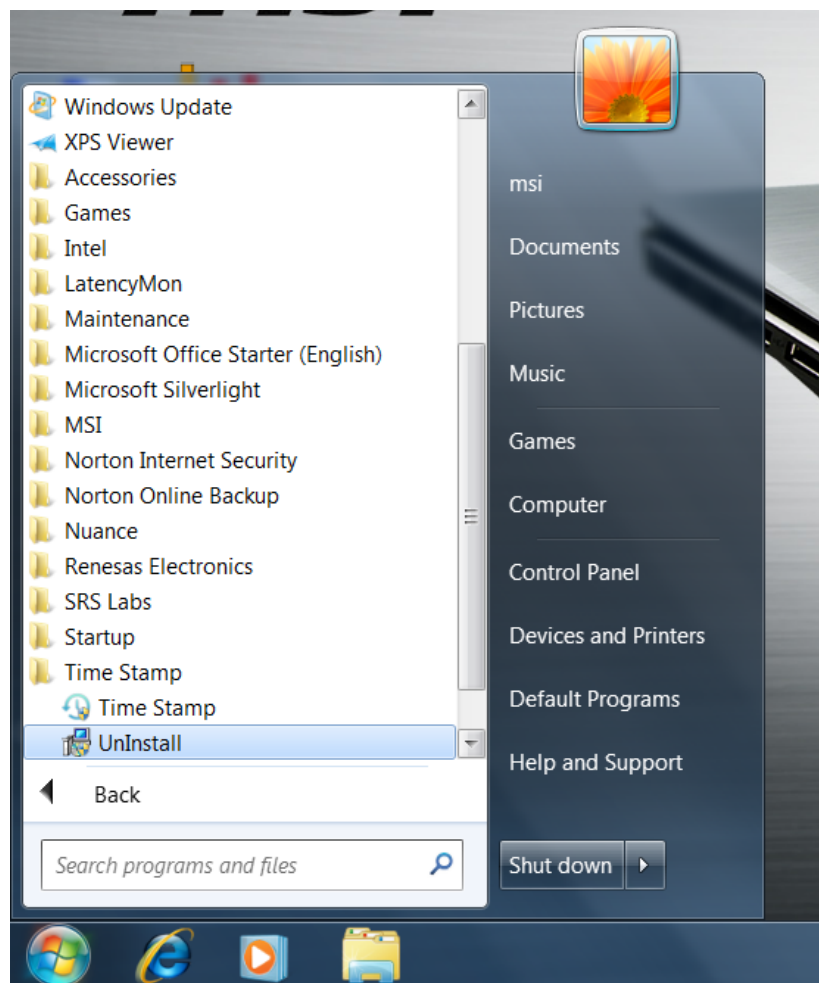
Your system is now recovered. In case the symptom would occur again, please **update your Time Stamp version** to the latest one and you may follow the instructions below to complete it.

## Time Stamp version update

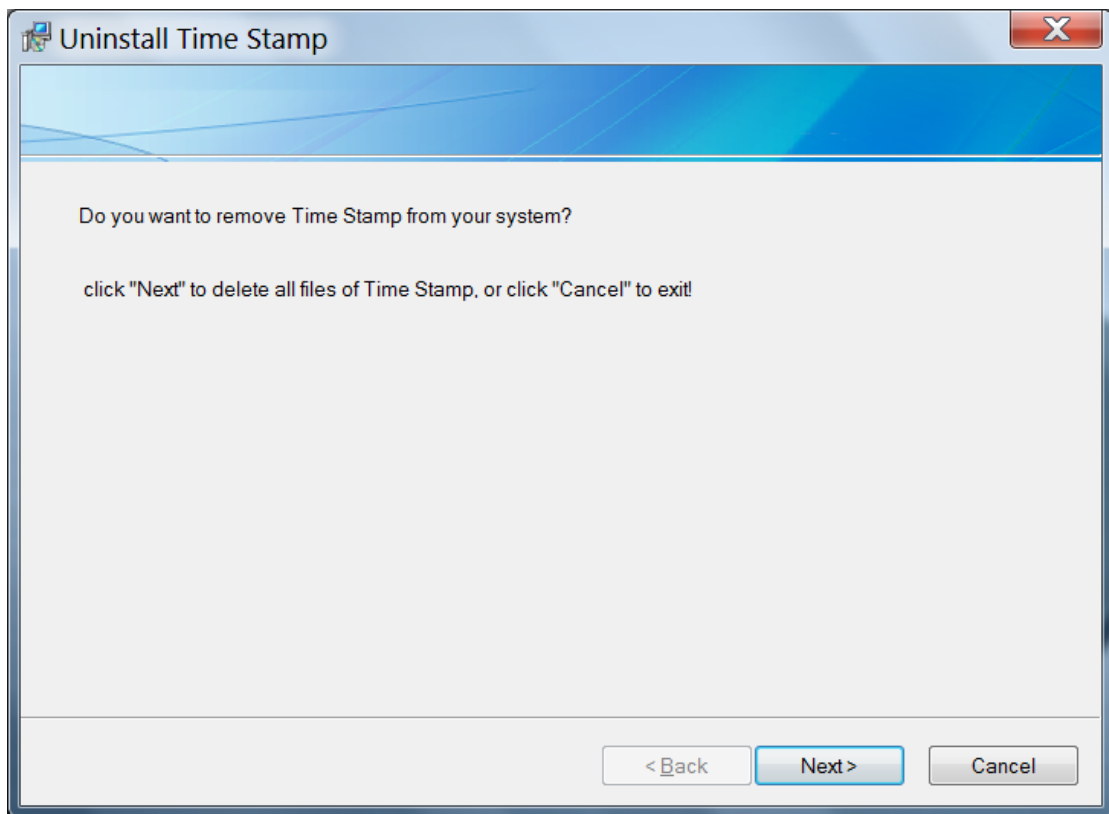
### NOTICE:

**Please be noted that the older version of Time Stamp must be removed before you install a new one. Once Time Stamp is removed, all backup data preserved by it will be erased as well and you will not be able to recover system back to those backups again.**

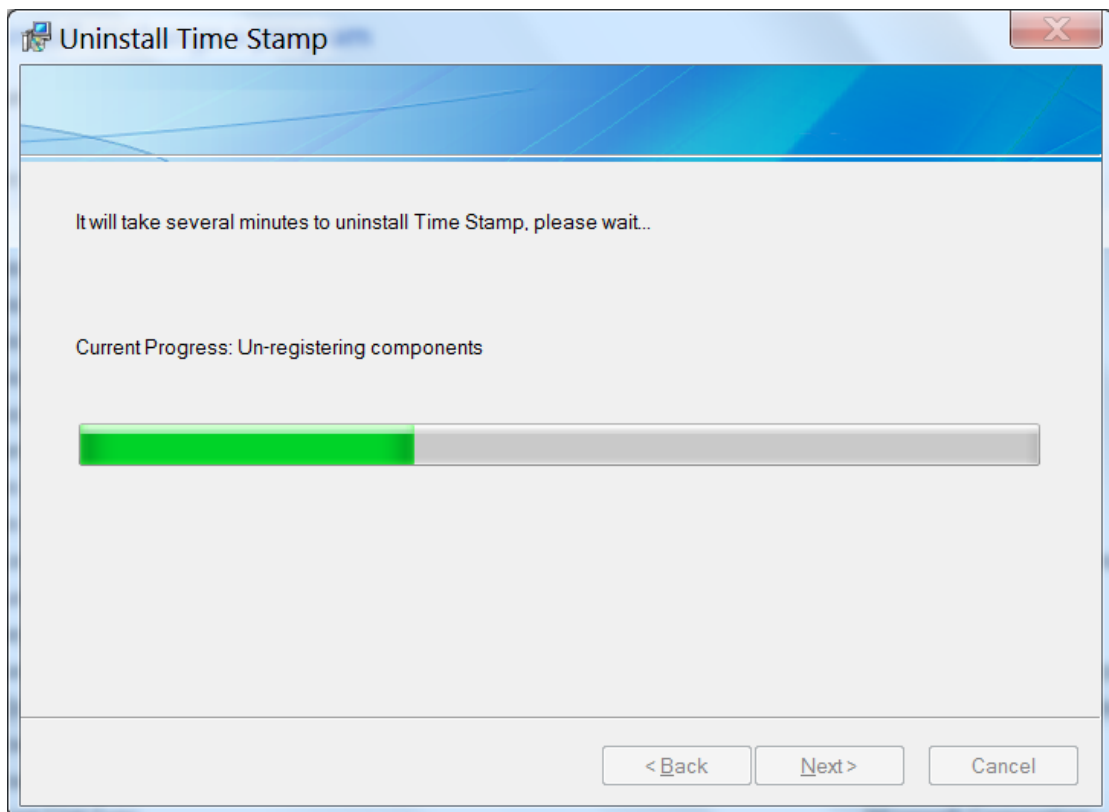
1. Please uninstall older version by clicking **UnInstall** shortcut. Or you may go to **Programs and Features** in Control Panel to uninstall Time Stamp. If UAC dialog pops up, please click **Yes** to continue the process.



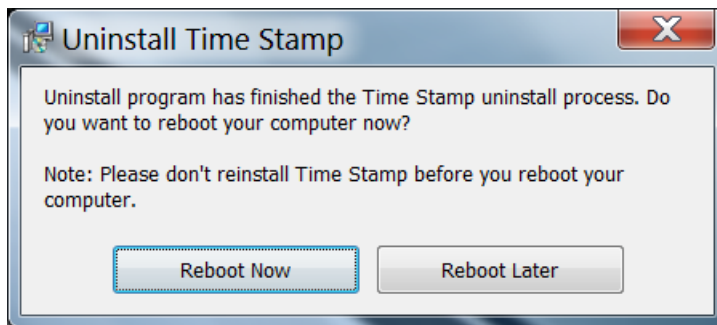
2. Click **Next**.



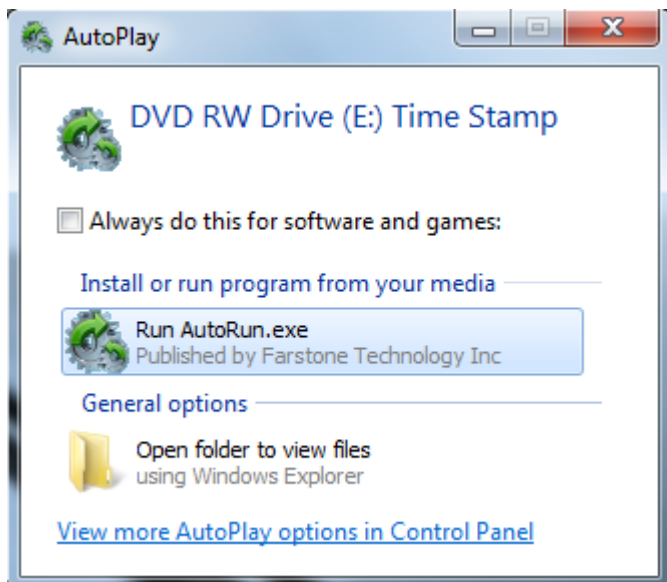
3. Time Stamp is now being uninstalled.



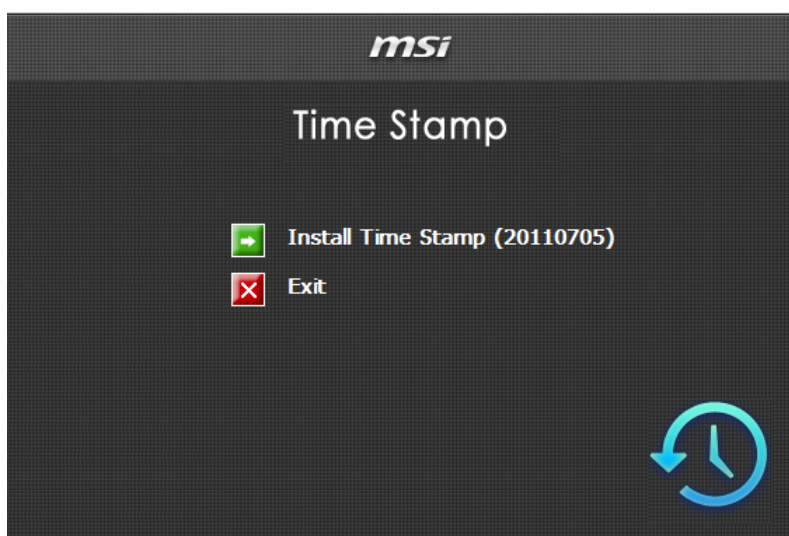
4. Please reboot computer. Do not reinstall Time Stamp before you reboot your computer.



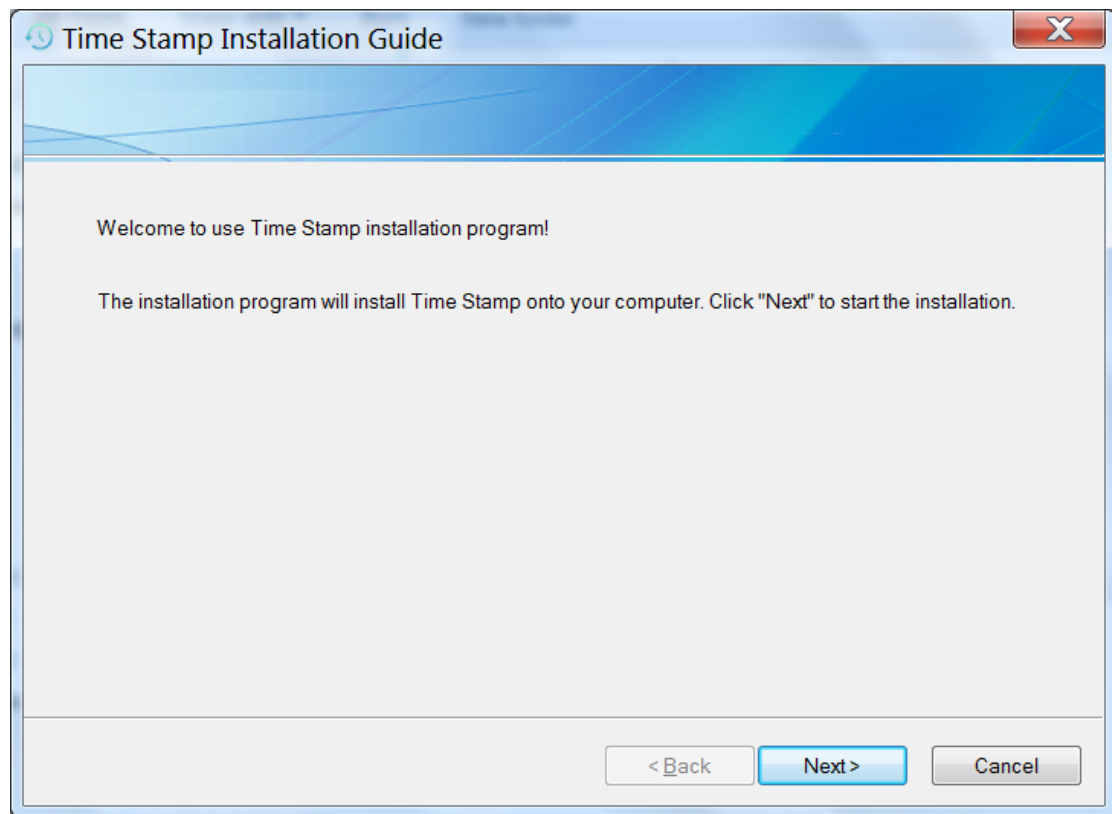
5. Put the installation CD into ODD after entering Windows.
6. The AutoPlay window will jump out, click "**Run AutoRun.exe**".



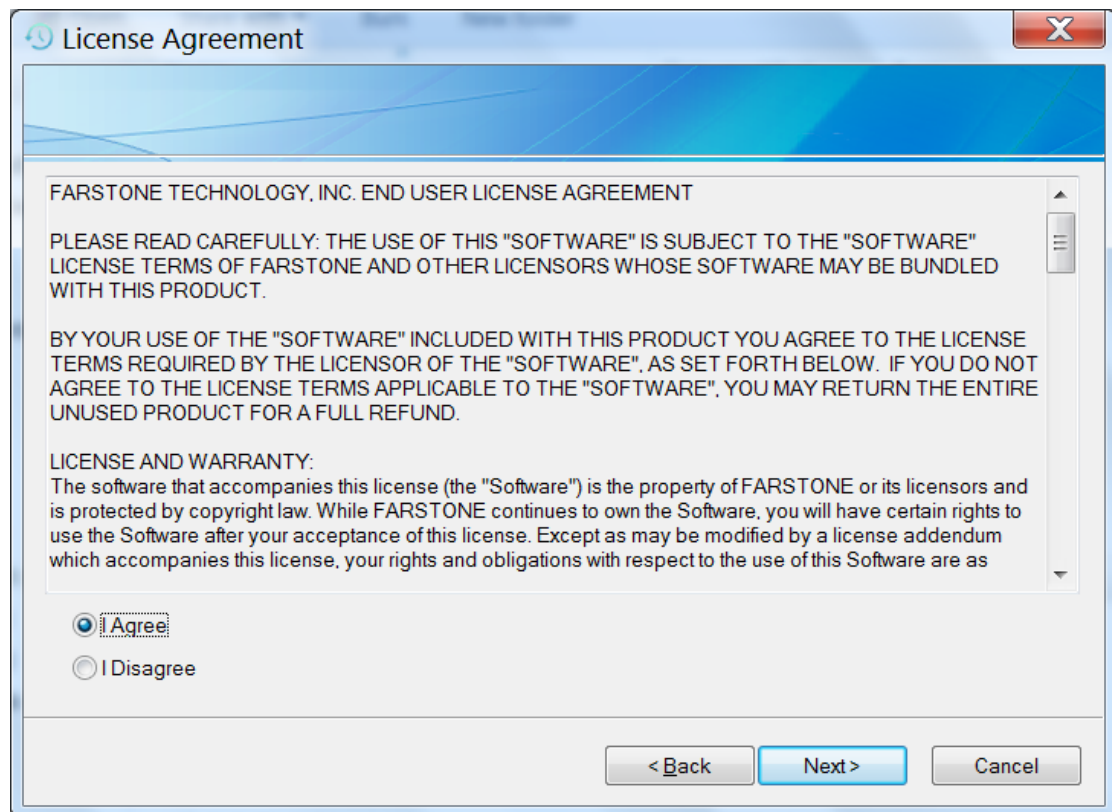
7. Select "**Install Time Stamp**".



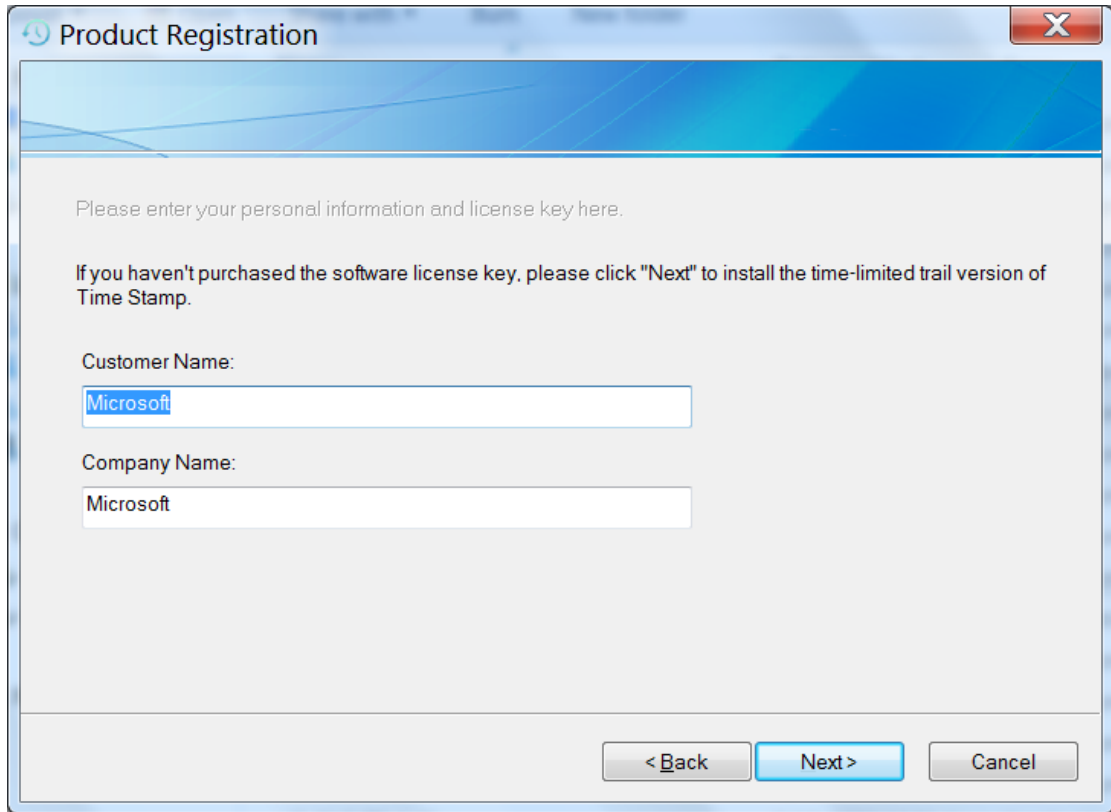
8. Click **Next** to start the installation.



9. Select **I Agree** and click **Next**.



10. Fill in the columns and click **Next**.



The dialog box is titled "Product Registration" and contains the following text and fields:

Please enter your personal information and license key here.

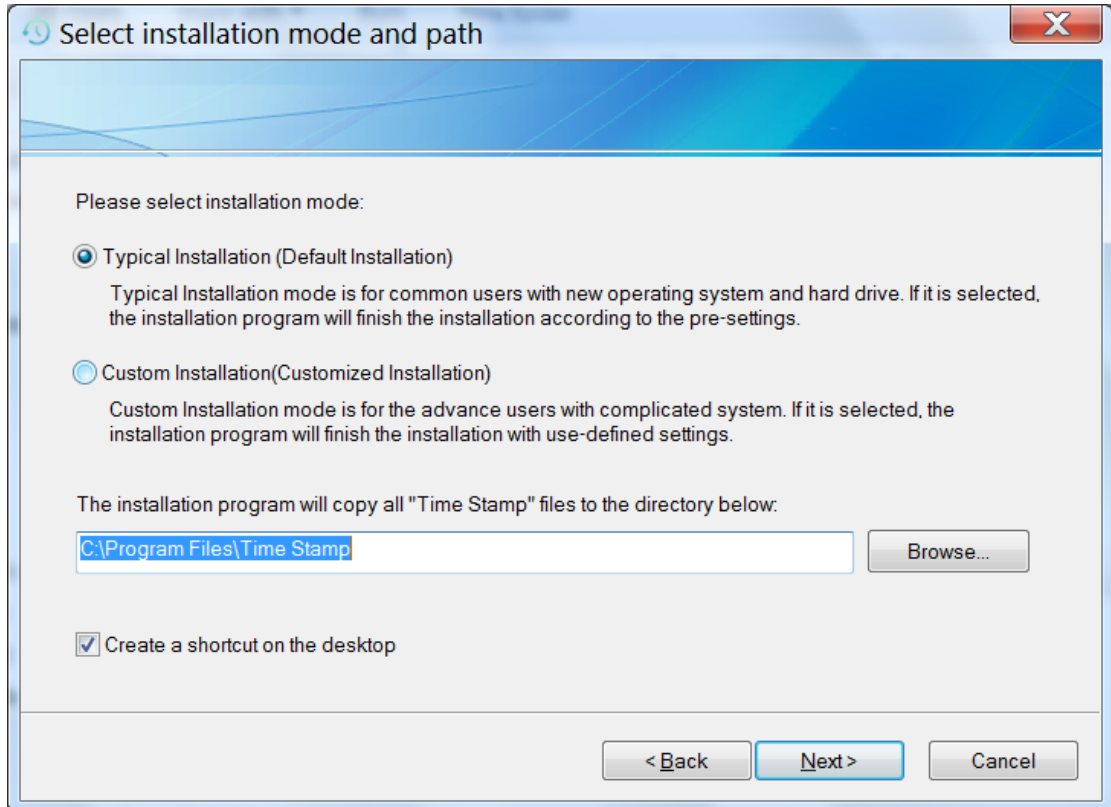
If you haven't purchased the software license key, please click "Next" to install the time-limited trail version of Time Stamp.

Customer Name:

Company Name:

At the bottom, there are three buttons: "< Back", "Next >", and "Cancel".

11. Select **Typical Installation (Default Installation)** and click **Next**.



The dialog box is titled "Select installation mode and path" and contains the following text and controls:

Please select installation mode:

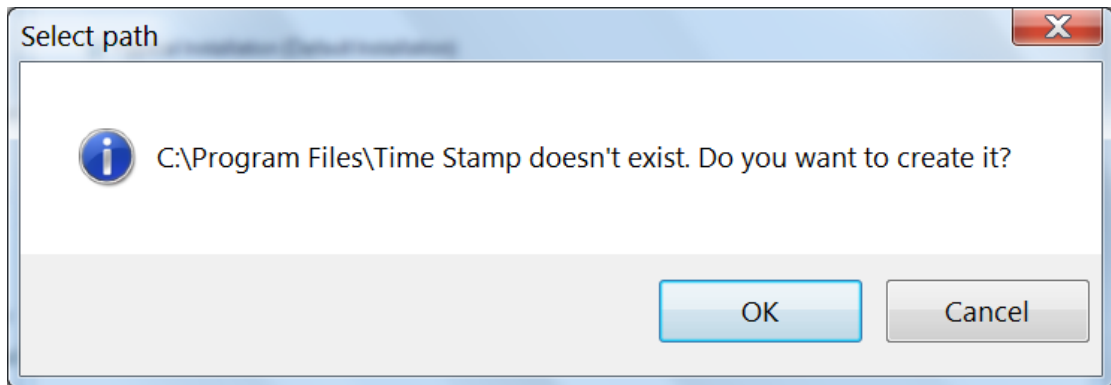
- Typical Installation (Default Installation)  
Typical Installation mode is for common users with new operating system and hard drive. If it is selected, the installation program will finish the installation according to the pre-settings.
- Custom Installation(Customized Installation)  
Custom Installation mode is for the advance users with complicated system. If it is selected, the installation program will finish the installation with use-defined settings.

The installation program will copy all "Time Stamp" files to the directory below:

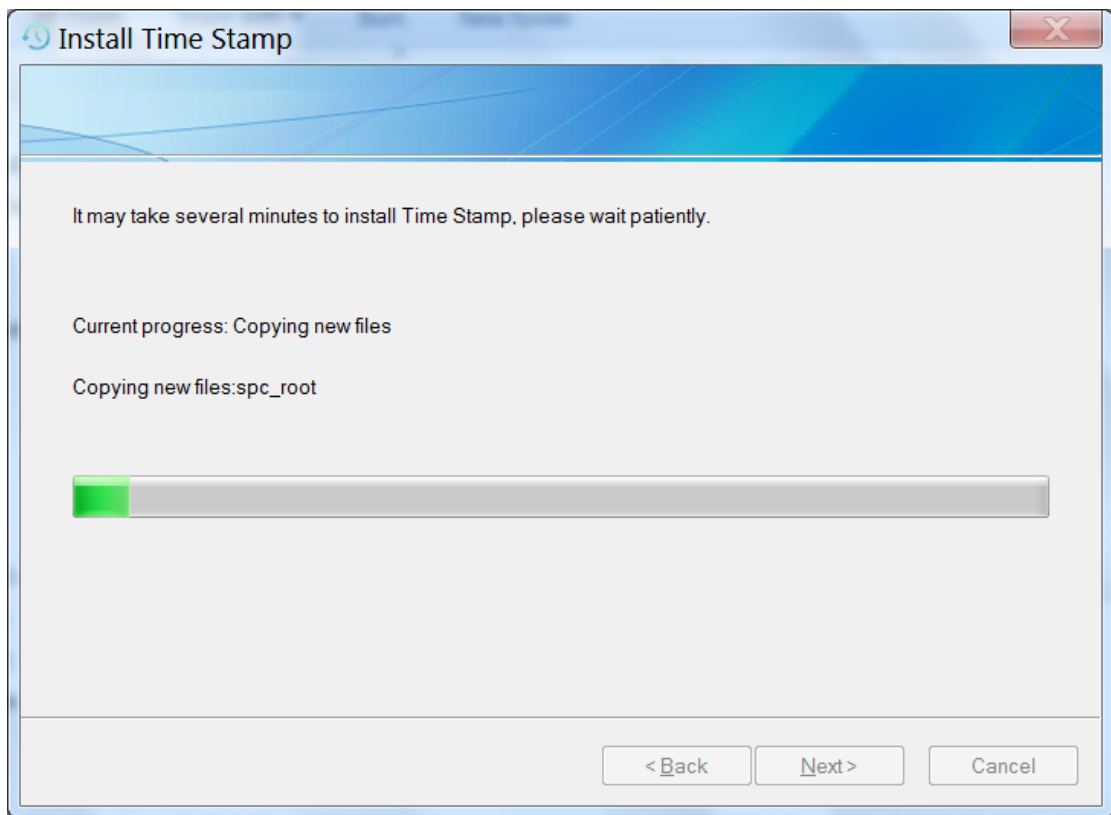
Create a shortcut on the desktop

At the bottom, there are three buttons: "< Back", "Next >", and "Cancel".

12. Click **OK**.



13. Time Stamp is now being installed.



14. Please click **Reboot Now** to complete the installation. After reboot, you are able to enjoy the Time Stamp again.

